



RTM-100 Magnetic Bearing Centrifugal Compressor

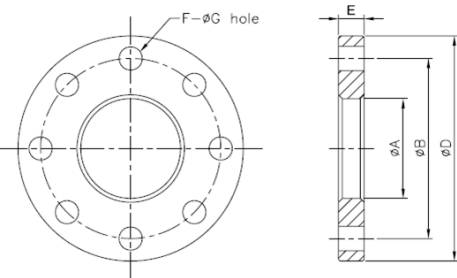
Specifications



Model		RTM-100	
Refrigerant		R134a / 1234ez	
Nominal cooling capacity		USRT(TONS)	500
Compressor	Type	Two-stage compression	
Axial Guide Vane Control	Inlet Guide Vanes	20~100% continuous	
	Voltage	220 VDC	
	Input Signal	4~20mA - DC: 1~5V - DC	
	Output Signal	4~20mA - DC	
Type		3 Phase, 2 Pole, Permanent magnet	
Motor	Starting	VFD	
	Voltage	V	460
	Insulation	Class H	
	Protection	PT100*9 - Motor Winding(5) - Magnetic Bearing (4)	
Transmission	Type	Direct-driven	
	Lubrication	Oil free	
Hydrostatic pressure test		PSI (kg/cm ² g)	321 PSI (22 kg/cm ² g)
Dimension (LxWxH) Compressor		FT	4.40' x 2.29' x 2.49' (1.34 x 0.85 x 0.76)
Weight (Compressor) 1 skid		LB/kg	2756 lb (1250kg)
Shipping Weight (Components) 1 skid		LB	

Suction/discharge/economizer flange size

Position	Size	A	B	D	E	F	G	Piping Thickness	Bushing OD
RTM-100	Suction	8"	8.70"	12.00"	13.78"	1.18"	0.47"	0.98"	0.32"
	Discharge	6"	6.71"	10.24"	12.00"	1.10"	0.24"	0.98"	0.28"
	MID-PRESS (Eco.)	2 1/2"	3.05"	5.51"	6.89"	0.79"	0.31"	0.75"	0.20"
Remarks	*Material- standard JIS 284.47 pounds per square inch steel unit: inches								



Discharge Check Valve Size

To protect compressor from serious damage due to reverse rotation after emergency stop or shutdown, it is necessary to install the discharge check valve.

Warning: Discharge check valve is mandatory

Size	A(in)	B(in)	C(in)	D(in)
4"	2.52"	6.14"	4.41"	2.08"
6"	2.99"	8.38"	6.30"	3.03"
8"	3.50"	10.51"	8.27"	4.01"
10"	4.49"	12.91"	10.24"	4.21"
Remark	*The check valve is of wafer plate valve. Use ANSI 150 standard flange			

Table-4 Check valve size

MCC

Model	Voltage	(kW)	Primary Side		SECONDARY SIDE (Inverter to RTM)	
	(V)		Hertz	MCC(A)	Hertz	MCC(A)
RTM-100	460	300	50/60	435	218.3	580